

Customer :

customer

Customer part :

customer part

Comment :

Comment

S1=1.68

S2=2.12

Tmax=462

Tp S2=501.0

PI=0.44

HI=107

Sample =1638.60

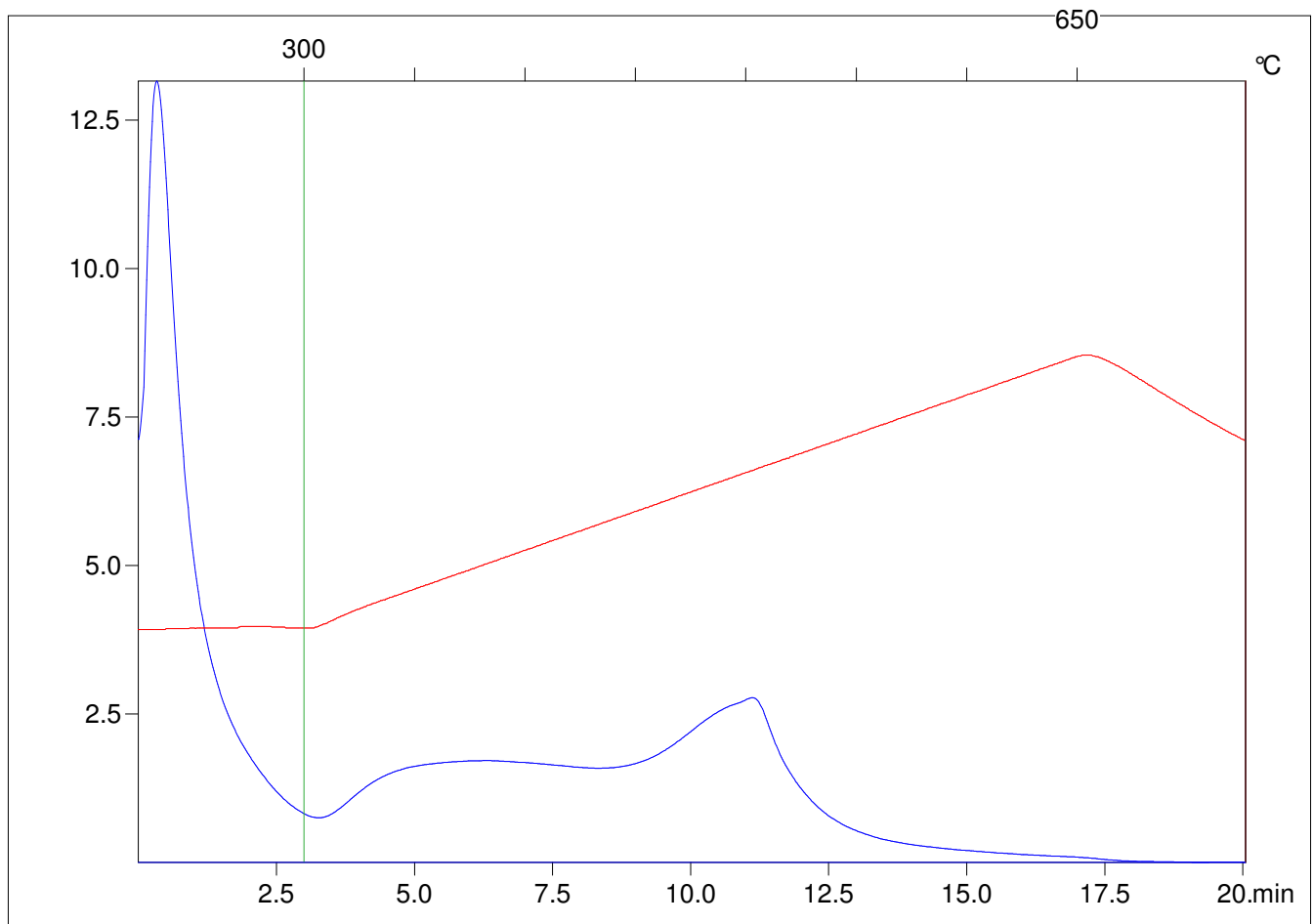
Method =Bulk Rock

Cycle=Basic

KFID(10\*9)=1444

Qty =70.4

TOC=1.98



C:\VINC\PK1792\PK038.R00 : FID pyrolysis graphic

State

Pyro Status

Oxi Status